



# Install a child seat in the front passenger seat

## WARNING ADMONITIONS

### **WARNING**

Never install a child seat in the front passenger seat when the airbag is activated. If the airbag deploys the child could be killed or seriously injured.

### **WARNING**

Never leave a child alone in the car. The temperature inside the car can quickly become hot and could result in death or serious injury.

## TEXT WIDE

### **We recommend**

We recommend that you seat your child in a rear-facing child seat for as long as possible (at least until 4 years of age), it's much safer. If they have outgrown the largest size of rear-facing child seat, we recommend they sit in a front-facing child seat for as long as possible. If they have outgrown the largest size of front-facing child seat, we recommend that they sit in the rear seat with the seat belt fastened, like an adult, rather than sitting in the front seat. But, always follow local laws; they differ from country to country.

### **Install**

1. [Deactivate the front passenger airbag.](#)
2. [Adjust the front passenger seat](#) to the highest position.
3. Install the child seat according to the child-seat manufacturer's instructions.
4. Check the child seat is secure.

If needed, here's how to [use the floor anchors](#).

### **Tall child?**

We recommend that they sit in the rear seat with the seat belt fastened, like an adult, rather than sitting in the front seat. Always follow local laws; they differ from country to country about when a child can stop using a child seat.

But, if needs must and your child will sit in the front seat without a child seat:

1. [Adjust the front passenger seat](#) to the highest position.
2. Keep the front passenger airbag activated.
3. Don't use a booster seat, and [use the seat belt](#) as per an adult.

## INFO

### **Did you know?**

Studies show that it's safer to put your [child in the rear seat](#).

## EXPLORE

[Install a child seat in the rear seat](#)

[Activate or deactivate front passenger airbag](#)

[Front passenger airbag warning label](#)

# Install a child seat in the rear seat

## WARNING ADMONITIONS

### **WARNING**

Never leave a child alone in the car. The temperature inside the car can quickly become hot and could result in death or serious injury.

## TEXT WIDE

Install the child seat according to the child-seat manufacturer's instructions, making sure that it does not touch the backrests of the front seats, as this could interfere with the function of the child seat.

In the rear seat, you can use:

- [ISOFIX/i-Size](#)
- [The car's seat belt](#)

### **We recommend**

We recommend that you seat your child in a rear-facing child seat for as long as possible (at least until 4 years of age), it's much safer. If they have outgrown the largest size of rear-facing child seat, we recommend they sit in a front-facing child seat for as long as possible. If they have outgrown the largest size of front-facing child seat, we recommend that they sit in the rear seat with the seat belt fastened, like an adult, rather than sitting in the front seat. But, always follow local laws; they differ from country to country.

## EXPLORE

[Install a child seat in the front passenger seat](#)

[Activate or deactivate the child safety locks](#)

[USE THE POWER WINDOWS](#)

# Install a child seat with the car's seat belt

## WARNING ADMONITIONS

### **WARNING**

Never install a child seat in the front passenger seat when the airbag is activated. If the airbag deploys the child could be killed or seriously injured.

### **WARNING**

Never leave a child alone in the car. The temperature inside the car can quickly become hot and could result in death or serious injury.

## TEXT WIDE

### **Install**

1. Pull out the car's seat belt **completely**.
2. Secure the child seat with the car's seat belt, according to the child-seat manufacturer's instructions.
3. Pull the car's seat belt tight around the child seat.
4. Check the child seat is secure.

**Note:** Always install the child seat correctly even when it is not in use and left inside the car, to reduce the risk of any damage.

**Note:** We do not recommend using a child seat that has a support leg in the center rear seat.

## INFO

### **Extra-secure installation**

The outer rear seats are fitted with [top tether anchors](#) for use with forward-facing child seats, and the outer rear seats and the front passenger seat have [floor anchors](#) for use with rear-facing child seats.

## EXPLORE

[Activate or deactivate front passenger airbag](#)

[Activate or deactivate the child safety locks](#)

[Use the child seat top tether anchors](#)

[Use the child seat floor anchors](#)

# Install an ISOFIX child seat

## TITLE ICON



## WARNING ADMONITIONS

### **⚠ WARNING**

Never leave a child alone in the car. The temperature inside the car can quickly become hot and could result in death or serious injury.

### **⚠ WARNING**

Child seat anchor points are only designed for loads from correctly fitted child seats. Never attach more than one child seat to a single anchor. Never attach an adult seat belt or harness to an anchor. The anchor could break or malfunction and result in death or serious injury.

## IMAGE LEFT



## TEXT RIGHT

### **Install**

1. Secure the child seat to the car's ISOFIX anchors, according to the child-seat manufacturer's instructions.
2. Check the child seat is secure.

If needed, the outer rear seats are fitted with **top tether anchors** for use with forward-facing child seats, and **floor anchors** for use with rear-facing child seats.

**Note:** Always install the child seat correctly even when it is not in use and left inside the car, to reduce the risk of any damage.

### **Follow the rules**

It's mandatory to place a child under 15 months in a rear-facing seat.

We recommend that you seat your child rear-facing until at least 4 years of age, it's much safer.

### **ISOFIX or i-Size?**

You can use either, both are compatible.

## INFO

### **Over-excited child?**

It's possible to use the [child safety locks](#) on the rear doors and you can also [deactivate the rear window controls](#).

## EXPLORE

[Activate or deactivate the child safety locks](#)

[Install a child seat in the rear seat](#)

# Use the child seat top tether anchors

## TITLE ICON



## WARNING ADMONITIONS

### **WARNING**

Child seat anchor points are only designed for loads from correctly fitted child seats. Never attach more than one child seat to a single anchor. Never attach an adult seat belt or harness to an anchor. The anchor could break or malfunction and result in death or serious injury.

### **WARNING**

Do not install any accessories that require the removal of the top tether or floor anchors or that can interfere with the use of the tether straps. Doing so could affect the operation of the child seat restraint system and could result in death or serious injury.

## IMAGE LEFT



## TEXT RIGHT

Both outer rear seats have top-tether anchors for additional installation of forward-facing child seats using a seat belt.

### **Instructions**

#### **Single-strap top tether**

1. Install the child seat according to the child-seat manufacturer's instructions.
2. Remove the parcel shelf in the luggage area.
3. Route the strap **under** the head rest.
4. Attach the strap to the anchor point according to the child-seat manufacturer's instructions.
5. Check the child seat and top tether straps are secure.

**No head rest?** If you have removed the head rest you can still use the top tether anchor, but you must make sure that the strap goes between the head rest sockets. Make sure the head rest is stored securely as well.

#### **Y-strap top tether**

1. Install the child seat according to the child-seat manufacturer's instructions.
2. Remove the parcel shelf in the luggage area.
3. Route the strap **either side** of the head rest.

## Use the child seat top tether anchors

4. Attach the strap to the anchor point according to the child-seat manufacturer's instructions.
5. Check the child seat and top tether straps are secure.

**No head rest?** If you have removed the head rest you can still use the top tether anchor, but you must make sure that the strap goes either side of the head rest sockets. Make sure the head rest is stored securely as well.

### INFO

#### Rear-facing child seat?

Great! It's safer for the child. The outer rear seats and the front passenger seat feature [floor anchors](#) that are suitable for rear-facing seats. Do not use the top tether anchors; they are intended for forward-facing seats.

### EXPLORE

[Install a child seat with the car's seat belt](#)

[Install an ISOFIX child seat](#)

[ADJUST THE REAR HEAD RESTS](#)



## Use the child seat floor anchors

### WARNING ADMONITIONS

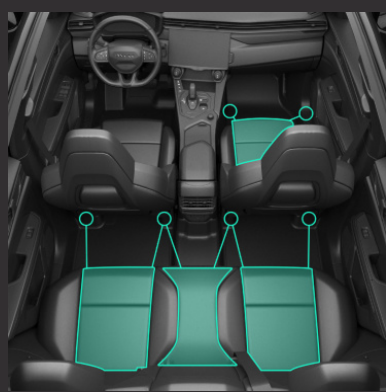
#### **⚠ WARNING**

Child seat anchor points are only designed for loads from correctly fitted child seats. Never attach more than one child seat to a single anchor. Never attach an adult seat belt or harness to an anchor. The anchor could break or malfunction and result in death or serious injury.

#### **⚠ WARNING**

Do not install any accessories that require the removal of the top tether or floor anchors or that can interfere with the use of the tether straps. Doing so could affect the operation of the child seat restraint system and could result in death or serious injury.

### IMAGE LEFT



### TEXT RIGHT

#### **What**

Both outer rear seats and the front passenger seat have floor anchors for additional installation of rear-facing child seats using a seat belt.

#### **Where**

- **Front passenger seat:** one anchor point on outer seat rail and one on the tunnel console
- **Outer rear seats:** one anchor point on each seat rail of the front seat in front of the outer rear seat
- **Middle rear seat:** one anchor point on the inner seat rails of the front seats

#### **Instructions**

1. Install the child seat according to the child-seat manufacturer's instructions.
2. Attach the strap(s) to the anchor point according to the child-seat manufacturer's instructions.
3. Check the child seat and strap(s) are secure.

### INFO

#### **Forward-facing child seat?**

Rear-facing child seats are safer for your child, and the floor anchors are designed to only work with rear-facing child seats. But, the outer rear seats feature **top-tether anchors** that are suitable for forward-facing seats.

## Use the child seat floor anchors

### EXPLORE

Install a child seat with the car's seat belt

# Activate or deactivate front passenger airbag

## TITLE ICON



## WARNING ADMONITIONS

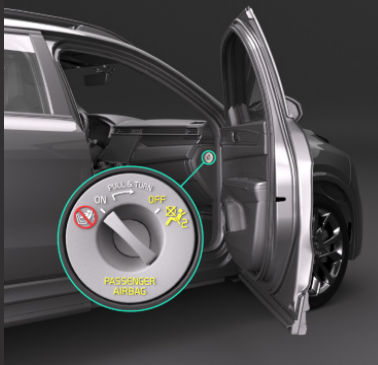
### **WARNING**

Never install a child seat in the front passenger seat when the airbag is activated. If the airbag deploys the child could be killed or seriously injured.

### **WARNING**

If the *Warning symbol* in the driver display and *deactivated airbag symbol* in the overhead console are shown at the same time, do not allow anyone to sit in the front passenger seat because they could be seriously injured or killed. Something is wrong with the airbag and you need to [Contact Lynk & Co.](#)

## IMAGE LEFT



## TEXT RIGHT

### Visual check

The overhead console and the driver display indicate if the front passenger airbag is active or not. If you turn the front passenger airbag on or off, the driver display informs you of the change.



Front passenger airbag **ON**



Front passenger airbag **OFF**

### Deactivate

1. Pull out the switch.
2. Turn to **OFF**.
3. Release the switch.

### Activate

1. Pull out the switch.
2. Turn to **ON**.

## Activate or deactivate front passenger airbag

3. Release the switch.

### INFO

#### **ON or OFF**

**ON** - Anyone over 140 cm in the front seat using the car seat belt

**OFF** - Any child in the front seat using a rear- or forward-facing child seat

### EXPLORE

#### DRIVER AND FRONT PASSENGER AIRBAGS

[Front passenger airbag warning label](#)

[Install a child seat in the front passenger seat](#)

# Front passenger airbag warning label

## TITLE ICON

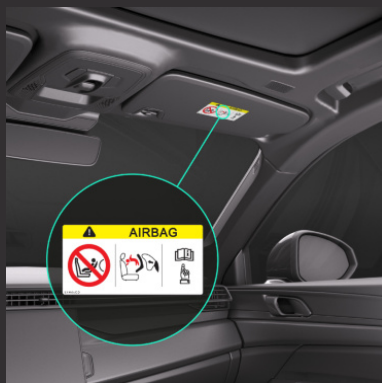


## WARNING ADMONITIONS

### **WARNING**

Never use a rearward facing child restraint on a seat protected by an ACTIVE AIRBAG in front of it, DEATH or SERIOUS INJURY to the child can occur.

## IMAGE LEFT



## TEXT RIGHT

### **Where**

The warning label is on the sun visor of the front passenger seat.

### **Why**

To remind you to [deactivate the front passenger airbag](#) if you are travelling with a child seat on the front seat.

## INFO

### **Did you know?**

Studies show that it is safer to put your child in the rear seat.

## EXPLORE

### DRIVER AND FRONT PASSENGER AIRBAGS

[Activate or deactivate front passenger airbag](#)

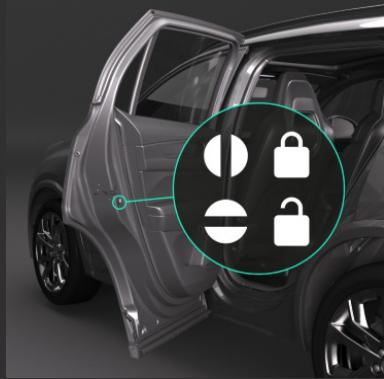
[Install a child seat in the front passenger seat](#)

# Activate or deactivate the child safety locks

## TITLE ICON



## IMAGE LEFT



## TEXT RIGHT

### What

When the child safety lock is active the rear door(s) can't be opened from the inside. You activate/deactivate the child safety lock separately for each rear door.

**Note:** Activating the child safety locks does not [deactivate the rear window controls](#).

### Where

The switch is found on the inside of each rear door.

### Activate/deactivate

Use the [key blade](#) or a wide, flat object (like a key or flat-headed screwdriver) to turn the switch to the appropriate setting.

## INFO

### What about the windows?

It's all well and good putting the child locks on the doors, but if you want, you can also [deactivate the rear window controls](#).

## EXPLORE

[Install a child seat in the rear seat](#)

# Child seat compatibility

## WARNING ADMONITIONS

### **WARNING**

Never install a child seat in the front passenger seat when the airbag is activated. If the airbag deploys the child could be killed or seriously injured.

## TEXT WIDE

### What

This table shows child seat compatibility with seat belt attachment and/or with ISOFIX/i-Size attachment.

	Front passenger seat (passenger airbag on)	Front passenger seat (passenger airbag off)	Outer rear seats	Center rear seat
Seating position suitable for universal belted	No	Yes <sup>1</sup>	Yes	Yes <sup>2</sup>
i-Size seating position	No	No	Yes	No
Seating position suitable for lateral fixture	n/a	n/a	No	n/a
Largest suitable rearward facing fixture	n/a	n/a	ISO/R3	n/a
Largest suitable forward facing fixture	n/a	n/a	ISO/F3	n/a
Largest suitable booster fixture	n/a	n/a	ISO/B2	n/a

<sup>1</sup> Only when the front passenger seat is adjusted to the highest position.

<sup>2</sup> A child seat with a support leg may have some interaction with the center console. Check the compatibility of the child seat with the child seat manufacturer.

## INFO

### Follow the rules

Always comply with local laws because they are not the same in all countries.

## EXPLORE

[Install a child seat in the front passenger seat](#)

[Install a child seat in the rear seat](#)

[Activate or deactivate front passenger airbag](#)

[Install an ISOFIX child seat](#)

[Recommended child seats](#)

# Recommended child seats

## WARNING ADMONITIONS

### **WARNING**

Never install a child seat in the front passenger seat when the airbag is activated. If the airbag deploys the child could be killed or seriously injured.

## TEXT WIDE

### What

This table shows the recommended child seats with seat belt attachment and/or with ISOFIX/i-Size attachment.

Child seats	Installation mode	Child group (ECE R44)/Child stature (ECE R129)
Maxi Cosi Cabriofix	Belted Rearward Facing	Group 0+ (up to 13 kg)
Britax Römer King II LS	Belted Forward Facing	Group I (9–18 kg)
Britax Römer KidFix2 S	Belted/ISOFIX+Belt Forward Facing <sup>1</sup>	Group II (15–25 kg)
Graco Basic	Belted Forward Facing	Group III (22–36 kg)
BeSafe iZi Kid X2 i-Size	i-Size <sup>2</sup> Rearward Facing	61–105 cm
Britax Römer TriFix2 i-Size	i-Size <sup>3</sup> Forward Facing	76–105 cm

<sup>1</sup> Removing the backrest is not recommended. Use the seat belt guide (SecureGuard) for the lap part of the belt according to the child-seat manufacturer's instructions.

<sup>2</sup> ISOFIX anchors + support leg.

<sup>3</sup> ISOFIX anchors + top tether anchors.

## EXPLORE

[Install a child seat in the front passenger seat](#)

[Install a child seat in the rear seat](#)

[Child seat compatibility](#)